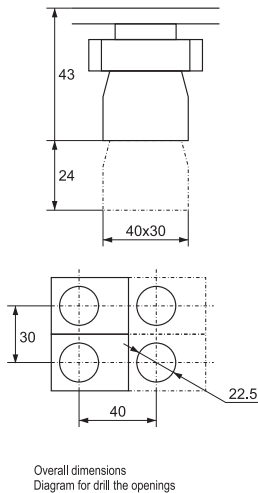


Documents corresponding to the product: Standard: EN 60947-1; EN 60947-5-1



BUTTONS AND LED INDICATORS

These are devices used in control and indication systems, command boards and panels in industrial automation systems. They are manufactured to commute controlling circuits and to control the switching on or off executive mechanisms such as relays, contactors, etc. The signal lamps and indicators find broad application in all industrial fields. The devices endure short time current overload up to 10A, and normally they can commute thermal current up to 6A in their contact system. The connection to the contact terminals is through screw terminals to which operational conductors with section up to 2.5mm² can be joined.

DOCUMENTATION CORRESPONDING TO THE PRODUCT:

- Standard: EN 60947-1; EN 60947-5-1

TECHNICAL DATA:

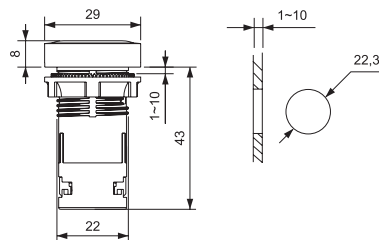
- Insulation voltage: 660V; 50/60Hz
- Impulse voltage wear resistance: 6000V;
- Rated current: 6A (230V AC); 0.3A (230V DC)
- Short circuit protection: safety device 10A gG outside in the circuit
- Mechanical wear resistance: 1x10⁶ commutation cycles
- Power of mechanical compression:

- at closing: 20N
- at opening: 8N
- Operating temperature: -20 - +65°C
- Humidity: 35 - 85%RH
- Tightening moment of the joining conductors: 0.15Nm
- Section of the conductor: 1x0.5; 1x0.75; 1x1; 1x1.5; 1x2.5mm²

MOUNTING:

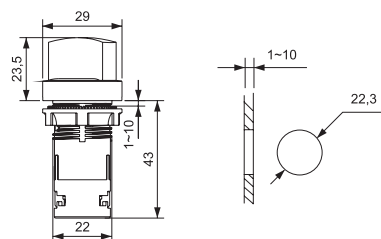
- to a flat metal or plastic surface with thickness: max 4mm
- opening with size: Ø 22.5mm

Type	Description	Type of contacts	Rated current (A) at 400V	Colour	Packing / Box (pcs)	Product category	Catalogue number
EL-EA25	Button round with spring reverse	NO+NC	6	black	10/500	B	401025
EL-EA31		NO	6	green	10/500	B	401030
EL-EA42		NC	6	red	10/500	B	401040



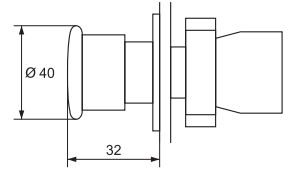
Type	Description	Type of contacts	Rated current (A) at 400V	Colour	Packing / Box (pcs)	Product category	Catalogue number
EL-EA25	Button round with spring reverse and silicon lid- IP44	NO+NC	6	black	10/500	B	401026
EL-EA31		NO	6	green	10/500	B	401033
EL-EA42		NC	6	red	10/500	B	401041

Type	Description	Type of contacts	Rated current (A) at 400V	Colour	Packing / Box (pcs)	Product category	Catalogue number
EL-ED25	Switch with arrest	NO+NC	6	black	10/500	B	401425





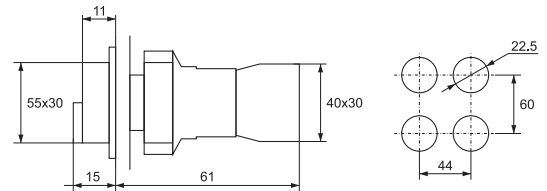
Type	Description	Type of contacts	Rated current (A) at 400V	Colour	Note	Packing / Box (pcs)	Product category	Catalogue number
EL 2- BC 42	Button with head "mushroom" type	1NC	6	red	spring reverse	15 / 150	B	401642



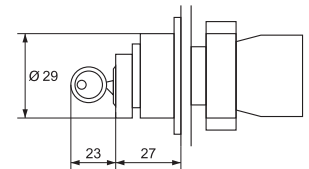
Type	Description	Type of contacts	Rated current (A) at 400V	Colour	Note	Packing / Box (pcs)	Product category	Catalogue number
EL 2- BS 545	Button with head "mushroom" type	1NC + 1NO	6	red	release with spinning	15 / 150	B	401545



Type	Description	Type of contacts	Rated current (A) at 400V	Voltage (V)	Note	Packing / Box (pcs)	Product category	Catalogue number
EL 2- BW8475	Button double	1NO+1NC	6	24 AC	Green and red button + LED indicator	20 / 200	B	401844
EL 2- BW8475	Button double	1NO+1NC	6	230 AC	Green and red button+LED indicator	20/200	B	401845



Type	Description	Type of contacts	Rated current (A) at 400V	Note	Packing / Box (pcs)	Product category	Catalogue number
EL 2- BG 21	Change-over switch with switch	1NO	6	two-position with switch	20 / 200	B	401121



Type	Description	Type of contacts	Colour	Packing / Box (pcs)	Product category	Catalogue number
EL02 - BE101	1	1 NO	green	100 / 1000	B	401001
EL02 - BE102	2	1 NC	red	100 / 1000	B	401002