



YESTERDAY, TOMORROW AND **BEYOND!**
YESTERDAY, TOMORROW AND **BEYOND!**
YESTERDAY, TOMORROW AND **BEYOND!**
YESTERDAY, TOMORROW AND **BEYOND!**



PERFECT SOLUTIONS FOR
YOUR ELECTRONICS PRODUCTION.

GLOBAL. AHEAD. SUSTAINABLE.



YESTERDAY, TOMORROW AND BEYOND!
YESTERDAY, TOMORROW AND BEYOND!
YESTERDAY, TOMORROW AND BEYOND!
YESTERDAY, TOMORROW AND **BEYOND!**
YESTERDAY, TOMORROW AND BEYOND!

BENCHMARK AS NO.1 SYSTEM SUPPLIER - THE BEGINNING OF A NEW ERA IN ELECTRONICS MANUFACTURING



Dear Ersa Customers,

In 1921, our company founder Ernst Sachs laid the foundation for an extremely successful company development when he was granted the patent for his development of the first electric soldering iron. For a century now, we have been setting the industrial standard in soldering time and time again with innovative technologies. This is a position that we are by no means resting on, but rather one that we want to use to drive the next level of electronics production with new products and systems based on our know-how.

In our anniversary year 2021, we continue to live up to this claim with three innovations that will revolutionize soldering once again. We are proud to present a very special trio to you: In the field of soldering tools, we present the i-CON TRACE, the first IoT-capable soldering station, that finally brings traceability to hand soldering. The HOTFLOW THREE heralds a new era of reflow soldering. It is based on the experience of 5,000 installed reflow soldering systems worldwide and, with its SMART CONVECTION POWER UNIT (SCPU®), ensures optimized soldering profiles and thus even better soldering results. Finally, the VERSAFLOW ONE, the new entry-level model in the VERSAFLOW world, incorporates decades of expertise in leading selective soldering technology, which delivers top results in terms of quality and throughput in a compact footprint.

GLOBAL. AHEAD. SUSTAINABLE.

We are particularly pleased to be able to celebrate the Ersa anniversary year together on the basis of our corporate claim "Global. Ahead. Sustainable." on a worldwide scale. With our systems, you will always be at least that one decisive step ahead in the dynamic competition of electronics manufacturing - sustainable all along the line.

Yours

A handwritten signature in black ink, appearing to read "Rainer Krauss".

Rainer Krauss
General Sales Director

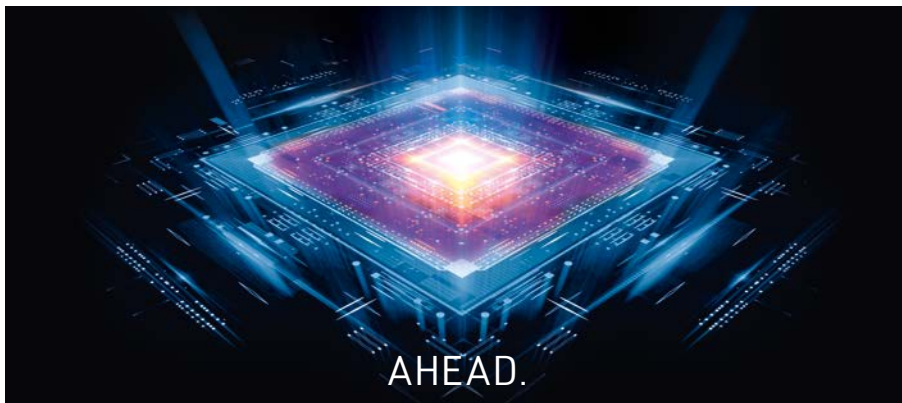
A handwritten signature in black ink, appearing to read "Hansjürgen Bolg".

Hansjürgen Bolg
Vice President Ersa Tools,
Rework- & Inspection Systems





WORLDWIDE APPLICATION CENTERS
ONE FAMILY **CUSTOMER SERVICES**
 WORLDWIDE ANY TIME – ANYWHERE
 PARTNERSHIPS MADE BY KURTZ ERSA
 MULTICULTURAL · CONNECTIVITY **GLOBAL PLAYER**
 PROCESS KNOW HOW UNIFIED QUALITY STANDARD



SERVICES · TRAINING & SUPPORT
REWORK **AUTOMATION**
 PROCESS MONITORING INSPECTION & VISION
 TURN KEY SOLUTIONS · SYSTEM SUPPLIER **SOLDERING**
 INDUSTRY 4.0 REFLOW · VACUUM · WAVE · SELECTIVE · HAND
 PRINTING 3D-SPI ROBOTIC



FAIRNESS & TRUST **RESPECT**
 TRADITION SINCE 1779 OUR COMMITMENT FOR YOUR SUCCESS
 TEAM SPIRIT
 ENERGY SAVING & CO₂ NEUTRALITY · SAFETY
FAMILY BUSINESS **GOGREEN250**
 GENERATIONS OF RELIABLE PARTNERSHIPS RESOURCE EFFICIENT · RECYCLING
 SUSTAINABLE PRODUCTS

YOU SHAPE THE FUTURE. WE SUPPORT YOU.

SMART WORK & LIVING

Never before have the worlds of professional and private life changed so much, so quickly. Highly productive interaction at all levels is unimaginable without intelligently networked systems. Whether "work" or "living" - support from electronic assemblies that reliably deliver their job is becoming increasingly important.

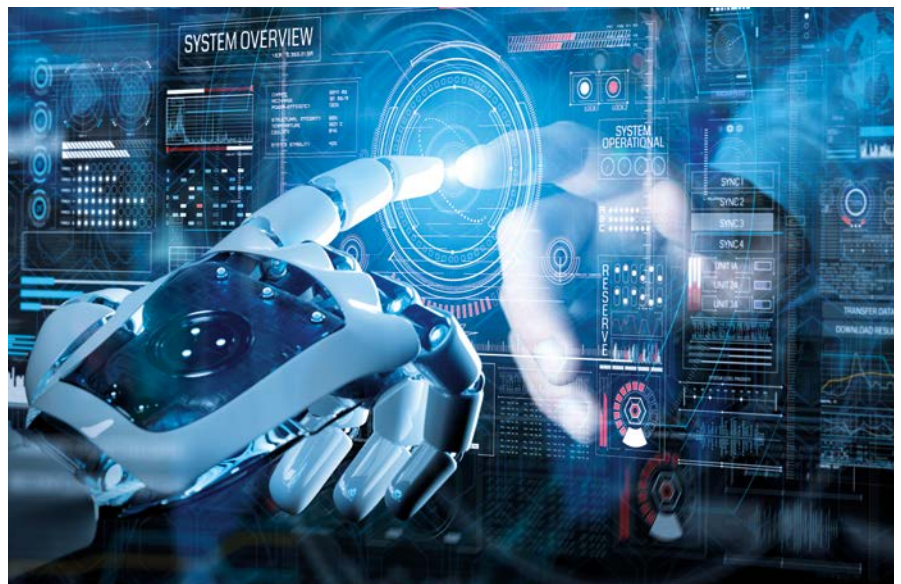


AUTONOMOUS VEHICLES

For the new vehicle concepts of tomorrow we already offer you the perfect equipment today. This includes intelligent and safe connections of sensor technology, safety systems and power electronics with automotive electronics as well as internal and external networks.

AUTOMATION

We offer you individual process optimization through perfectly synchronized handling and automation solutions. The Kurtz Ersa modular system impresses with a wide range of conveyor systems, work stations for assembling or quality inspection, ROBOPLACE robotic solutions and much more.



MEGATRENDS – DRIVEN BY KURTZ ERSA.

GREENTECH

Environmental and climate protection have been the biggest technology drivers on a global scale for a long time already. Energy efficiency and sustainability are essential requirements in the development of our systems, so that we contribute to a climate-neutral economy all along the line. As Kurtz Ersa Group, our goal is CO₂ neutrality by 2029!



CONNECTIVITY & 5G

5G is the new generation in mobile communications. This technology is creating the basis for new applications, such as the networking of machines in industry and communication between smart devices. In addition, 5G is becoming the technical basis to further expand digitalization in many areas of life. Ersa delivers convincing solutions for all challenges around connectivity and 5G electronics production.

ELECTROMOBILITY

Just as electromobility is gaining more and more momentum, also electric drives are becoming increasingly important in all areas of everyday life: from automobiles to scooters and e-bikes on the one hand, to tools and outdoor equipment on the other - less and less runs without batteries. Kurtz Ersa offers individual systems for these market segments for practically all tasks that require a secure connection of all conceivable components and assemblies.





INDUSTRY 4.0.

DRIVEN BY KURTZ ERSA.

We offer you future-proof industry 4.0 solutions and services with added value for production, process monitoring and quality control. For example, standardized connectivity with maximum security through Kurtz Ersä CONNECT and Kurtz Ersä GATE.



Intelligent ticket system for fast, efficient solution of error situations at Ersä systems. With digital real-time data from other modules. Also available as mobile APP.



ADDED VALUE THROUGH DIGITALIZATION.

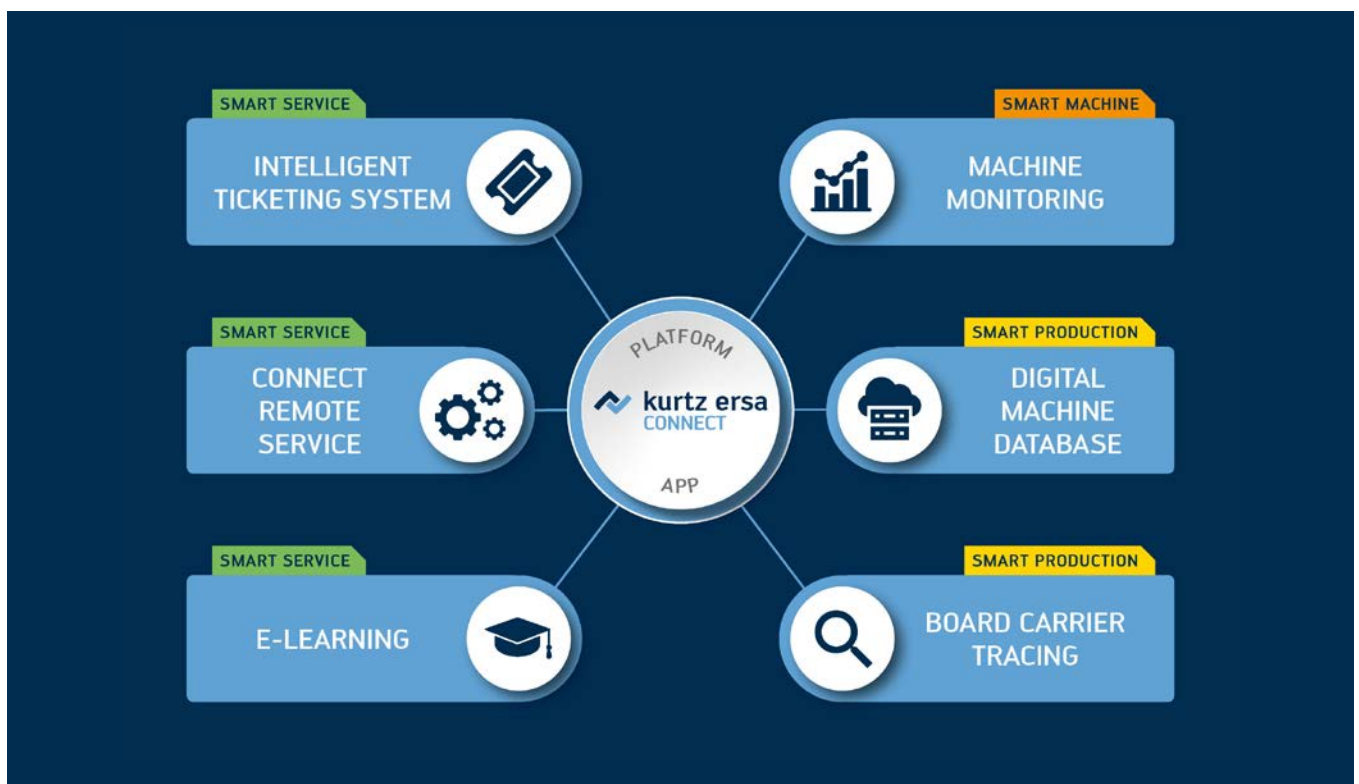
Through the use of modern communication and information technologies, people and machines can be networked with each other. Digitization and networking of the smallest components to highly complex systems lead to a significant increase in productivity. Kurtz Ersä offers Industry 4.0 solutions as a powerful way to optimize processes and make them technologically future-proof.

Kurtz Ersä CONNECT.

With Kurtz Ersä CONNECT, Ersä provides a platform with an integrated hardware and software infrastructure that ranges from the Kurtz Ersä machine portfolio to standardized interfaces and systems in use at customers. These digital offers are accessible independent of location and device, as well as they increase the reliability and availability of each individual system. Whereas in the past it was only possible to respond to specific situations, today information can be evaluated and interpreted in advance on the basis of data.

YOUR ADVANTAGES

- Increase in service speed/quality and process reliability
- Acquisition of important data for process and machine monitoring
- Intelligent and comfortable ticket system
- Benefit from expert know-how through integrated digital service and training processes
- Safeguarding competitiveness through increased efficiency and better capacity utilization of the overall systems



INDUSTRY 4.0

Technical Infrastructure.

Our gateway (Edge Device) provides a secure and standardized connection between Ersas facilities and the outside world - including communication between cloud, applications and systems. The gateway processes the measured data and information obtained and transfers it securely to the Kurtz Ersa Cloud or, optionally, directly to the customer's systems.

Thanks to Kurtz Ersa GATE's edge device capabilities, Ersa can offer intelligent solutions and features without a permanent internet connection.



In addition to the transfer, e.g. of live information for real-time monitoring applications, the gateway offers many other options, such as remote access in urgent service cases.

Kurtz Ersa CONNECT

Data security: Safety first!

The security of the resulting and stored data is always guaranteed - all current standards such as MQTT (Message Queuing Telemetry Transport) and AMQP (Advanced Message Queuing Protocol) are applied to ensure the highest possible protection of customer data and interests.

If necessary, a hardware switch is also available to interrupt the connection.



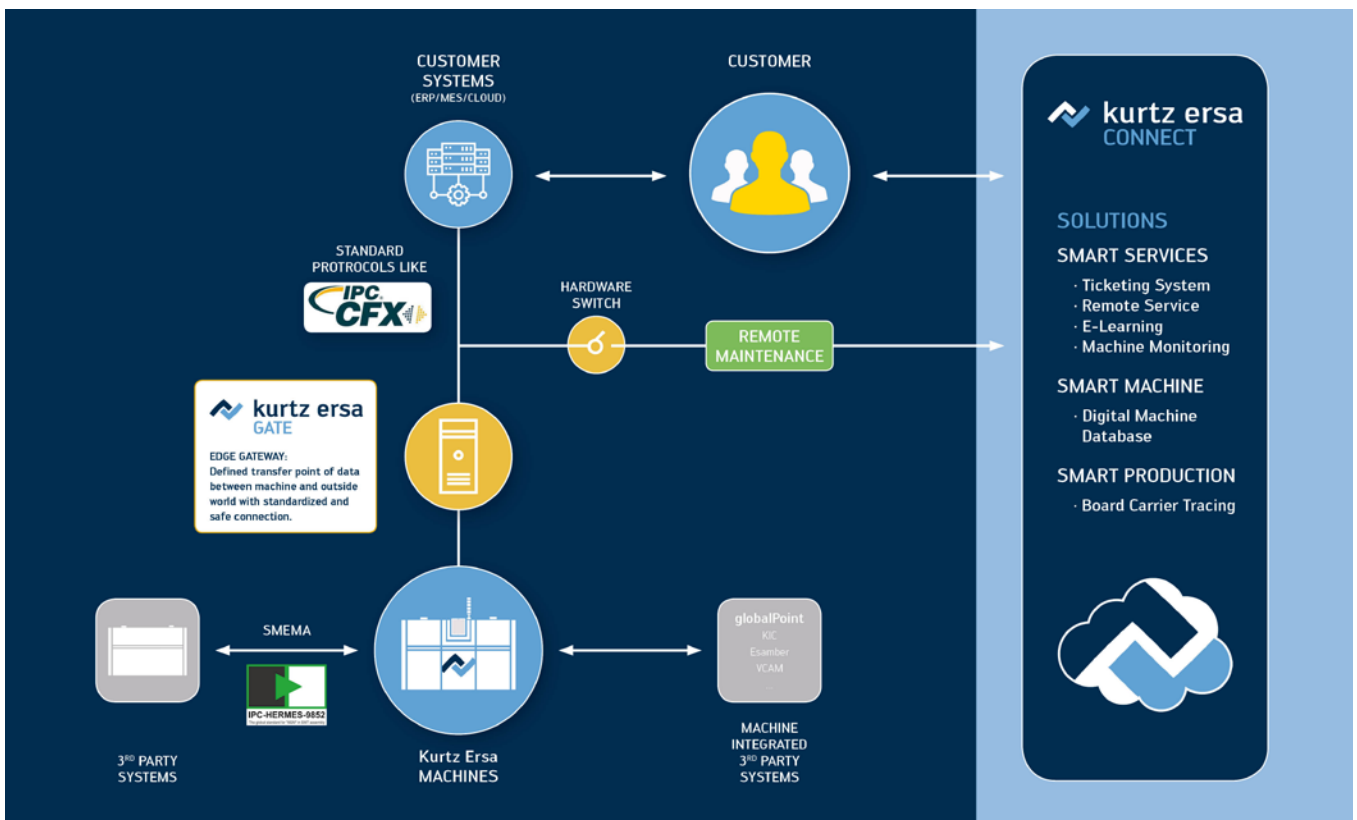
INDUSTRY 4.0 on board: The Gateway Kurtz Ersa GATE ensures safe, standardised connections between Ersa systems and the outside world.

YOUR ADVANTAGES

- Standardized basic system for all Industry 4.0 solutions
- Possibilities for intelligent data preparation
- Centralized information
- Connection with the highest possible security
- Intelligent Edge Gateway with the ability to operate offline

HIGHEST POSSIBLE SAFETY

- End-to-end data protection
- Hardware switch
- Edge Device
- Location Kurtz Ersa-Server
- Continuous monitoring



STENCIL PRINTERS

THE STENCIL PRINTERS THAT CONTROL THEMSELVES.

The VERSAPRINT 2 is the latest generation of stencil printers from Erska, based on the proven concept of the VERSAPRINT series. Modern drive technology with encoders enhances control and verification of positioning processes on all process relevant axes. The VERSAPRINT 2 uses modern camera technologies for fast setup and integrated 100 % inspection of the print area. The new software design provides, together with touch monitor and

compact 180 degree rotatable monitor arm provides for, an efficient and space-saving operation of the printer. "Features on demand" flexibility means that the VERSAPRINT 2 can be ideally adapted to customer requirements.

Four models are available. The VERSAPRINT 2 ELITE and VERSAPRINT 2 ELITE plus are ideal printers for the entry into line production or when a 100 % inspection is not desired – for example, because a SPI system already exists in the line. The VERSAPRINT 2 ELITE plus can be retrofitted with 2D or



3D SPI. If a 2D or 3D inspection is necessary from the outset, the VERSAPRINT 2 PRO² and the VERSAPRINT 2 ULTRA³ fulfill all requirements.



VERSAPRINT 2 ELITE plus

The sturdy basic version uses an area camera to align the substrate to the stencil and can use this to carry out optional inspection tasks. The stencil support can be adjusted without tools for frame sizes from 450 mm to 740 mm. The ELITE plus can be upgraded or retrofitted with all the options available for the VERSAPRINT 2 series, including 2D and 3D-camera.



VERSAPRINT 2 PRO²

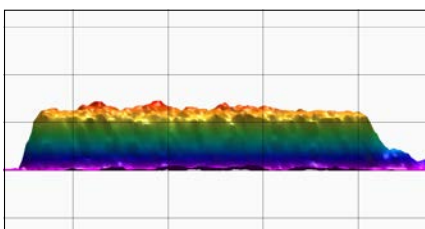
With its fast 2D-LIST camera (LIST = Line Scan Technology), this system is particularly suitable for products with a high inspection requirement. It can also be upgraded or retrofitted with all the options of the VERSAPRINT 2 series.



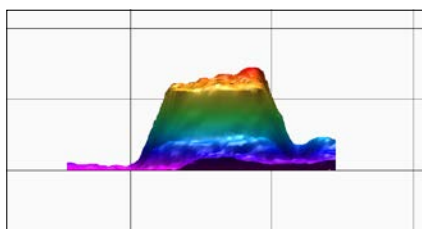
VERSAPRINT 2 ULTRA³

The ULTRA³ model uses the very latest measuring technology provided by the 3D-LIST camera. The shape of the smallest solder paste depots plays a major role in the printed volume and ultimately for the shape of the solder connection. Is the height of the paste depot consistent or does it drop towards the edges? The ULTRA³ can answer this question for you. It is both a stencil printer and 3D-SPI in one. It can also be upgraded or retrofitted with all the options of the VERSAPRINT 2 series.

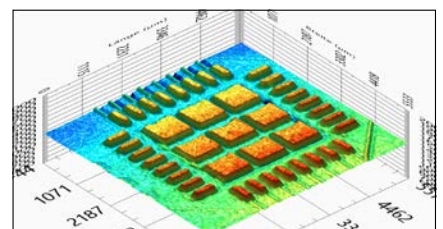
The inspection results are clearly displayed on the monitor.



Profile picture of the inspection result with height indication



Profile of the inspection result incl. height indication – rotated by 90°



Inspection result

A new era in Reflow Soldering.

HOTFLOW THREE

The Best Reflow Performance in every Aspect:
Quality. Efficiency. Flexibility. Cleaning. Connectivity.



With the new HOTFLOW THREE, Ersas adds another chapter to the long success story of its reflow soldering systems – more than 5,000 HOTFLOW reflow soldering systems have been installed worldwide in the past 20 years. By making a successful generation even better, system supplier Ersas is making a clear statement for even more quality in soldering

launching the HOTFLOW THREE – a reflow oven that has matured in all aspects. This system marks the beginning of a new era in reflow soldering. Absolutely unique selling point is the SMART CONVECTION POWER UNIT, or SCPU® for short. The motor and control unit which has been developed exclusively for Ersas ensures an optimized soldering profile

REFLOW SOLDERING



and thus an even better soldering result. Single zones can be controlled individually, which enables perfect alignment with the requirements of material and solder paste. In addition, the SCPU[®] of the new Ersä reflow system only consumes the power it requires, ensuring optimized use of the energy input. The same applies to the cooling zones and the

installed high-performance cooling unit. Overall, this results in further increased machine availability with impressive productivity, short maintenance times and easy operation via the intuitive ERSASOFT 5 user interface - with lower energy consumption.

REFLOW SOLDERING



THE HOTFLOW 3 AND 4 SERIES: INDIVIDUALLY TAILORED TO YOUR NEEDS.

Outstanding thermal performance, highest machine uptime and lowest operating costs have been the convincing advantages of Erska reflow soldering systems for many years already.

At the highest technical level, Erska systems solve virtually any task and can be configured to meet your individual needs.

The HOTFLOW 3 series: Precision for each size.

For particularly wide PCBs Erska offers their reflow models HOTFLOW 3/20 and HOTFLOW 3/26 as XL-versions, as well. The working width of machines with single conveyor consequently increases from 560 mm to 720 mm. The HOTFLOW 3 can be equipped with dual, triple and even quad track conveyors. Erska therefore offers the right machine for every SMT requirement.

The HOTFLOW 4 series: 100 % power with 65 % production costs.

With the HOTFLOW 4 series Erska achieved a further decisive reduction of nitrogen and energy consumption without loss of performance. In addition to best economic efficiency also an important contribution to saving resources and sustainability. A number of models differing in process tunnel length, process gas cleaning or innovative conveyor systems are available. In the relation footprint to productivity, the HOTFLOW 4 series redefines the industry standard. Thanks to the dual or triple conveyor option, the throughput can be substantially increased without enlarging the footprint.

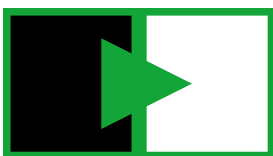


HOTFLOW 4/20

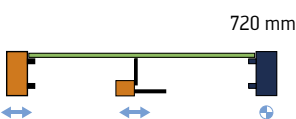


HOTFLOW 3/14e

HOTFLOW 4 series: Erska reflow soldering with process lengths from 3.26 m and 8 zones up to 7.70 m and 26 zones



IPC-HERMES-9852
The global standard for "M2M" in SMT assembly



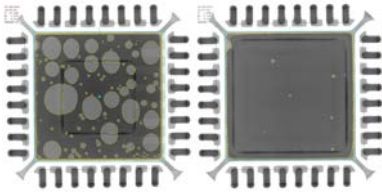
In the XL-version a maximum working width of 720 mm is possible; centre support and one rail are variable

The HOTFLOW 3 are available as 7-, 10- and 13-zone machine. The 7- and 10-zone HOTFLOW are also available as ECO-version HOTFLOW 3/14e or 3/20e.



HOTFLOW 3/26 XL

REFLOW SOLDERING



Before and after comparison:
more than 99 % void reduction



Infeed Heating zone Vacuum module Cooling zone

The Erska EXOS conveyor system is available in four segments, in the vacuum section free of lubricants and therefore extremely low-maintenance.

Ersa EXOS 10/26: Voidless reflow soldering with vacuum.

With the EXOS 10/26, Erska offers a vacuum reflow soldering system with eleven heating zones, three heating circuits for the vacuum chamber and four cooling zones for extremely voidfree connections in electronics production.

The absolute highlight of the EXOS is the vacuum chamber, which is part of the peak process area - this allows the void rate (depending on paste, component and PCB) to be reduced by up to 99 %.

The conveyor system is divided into four segments. Infeed, preheating and peak zone, vacuum module as well as cooling zone are equipped with their own individually controllable conveyor. The conveyor



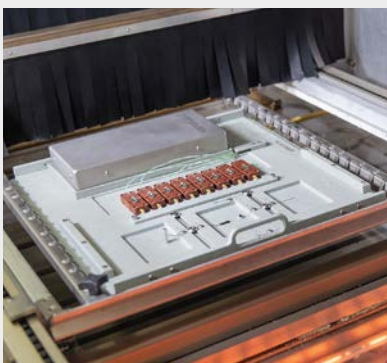
The Erska EXOS 10/26 has a 4-part transport system which is lubricant-free in the vacuum module.

system of the vacuum section is free of lubricants and therefore - like the system as a whole - of very low-maintenance. The EXOS software also allows the operator simple and intuitive operation of the various functions and ensures safe continuous operation.



Ersa EXOS 10/26 convection reflow soldering system with vacuum module

GLOBALPOINT MEASURING SYSTEMS AND PROCESS MONITORING HELPS TO AVOID ERRORS BEFORE THEY OCCUR.



GlobalPoint is a 100% Kurtz Erska subsidiary and develops measurement systems for process acquisition, analysis and optimization as well as online monitoring in real time. With the precise, innovative PTP® measurement technology - Professional Temperature Profiler - as well as matching measurement boards and intelligent, user-friendly software, globalPoint has been setting worldwide standards for all soldering processes for more than

20 years. The new Professional Temperature Monitoring (short PTM) now even enables the online monitoring of reflow soldering processes in real time. The decisive factor here is the temperature- time curve of the assemblies and, in parallel, the thermal setup of the reflow system.

globalPoint

THE ONE. FOR EVERYONE.

NEW: VERSAFLOW ONE –
Your Entry into Selective Soldering Excellence.



As system supplier for electronics manufacturing, Ersa GmbH is the longstanding undisputed technology leader in inline selective soldering. The VERSAFLOW ONE is the new entry-level model into the world of VERSAFLOW inline selective soldering machines - on board the most popular and/or proven configuration options such as pin-chain

conveyor with automatic transport width adjustment, IR lamps at the bottom and a solder pot with electromagnetic pump. The VERSAFLOW ONE incorporates decades of know-how from the market leader in the form of proven hardware and intuitive software (ERSASOFT 5). Despite its compact dimensions and attractive price, this

SELECTIVE SOLDERING



machine does not require the user to make any compromises in terms of quality and throughput. Set up, switch on, solder. Selective soldering can't be any faster or easier. And this is also true in times when delivery situations are not always easy. In addition to throughput and ease of maintenance, the VERSAFLOW ONE also scores in areas such as

availability, which has recently become a decisive factor in purchasing decisions. With a delivery time of about two to four weeks, Erska offers the highest availability worldwide – another important argument. The VERSAFLOW is THE ONE. FOR EVERYONE!

SELECTIVE SOLDERING



VERSAFLOW 4 series,
available as VERSAFLOW 4/55
or VERSAFLOW 4 XL



Thanks to the modular design, the systems can be optimally configured to meet individual requirements. A large number of highly efficient standard modules are available for this purpose.

VERSAFLOW 3 AND 4: EXACTLY CONFIGURABLE FOR EVERY NEED.

Having sold and installed more than 2,000 selective soldering systems worldwide, Ersa is both market as well as technology leader. The product range is always ideally tuned to the user's requirements. In the "classical line" version, the flexible modular concept of the VERSAFLOW 3 offers virtually unlimited combination possibilities, while the ECOCELL with its U-layout of the process zone offers the ideal prerequisites for manufacturing in production islands. ECOCELL can also be used universally: from mini wave soldering for high flexibility to multi-wave soldering for high-volume applications.

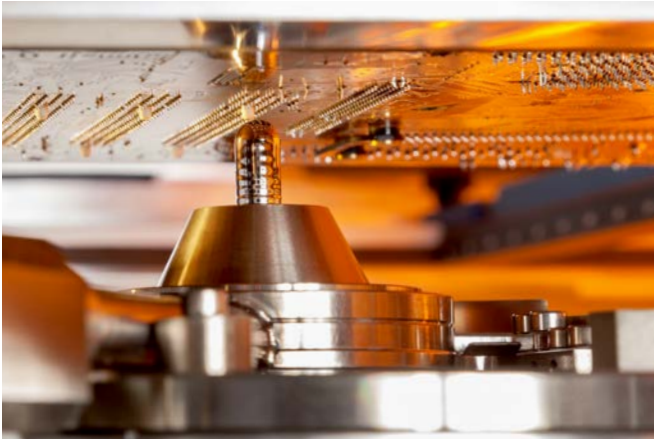
The ECOSELECT line is appropriate for those situations where the production volumes are not very high, but where the quality and the repeatability have to be up to the highest standards and may not be compromised.

The models of the VERSAFLOW 4 series convince not only by the flexible modular concept and the improved process flexibility, but also with a ultra-modern user interface – the new ERSASOFT 5.

Part of this machine generation is the VERSAFLOW 4 XL, which is especially designed for the soldering of PCBs in "XL" sizes. With the new VERSAFLUX and VERSAFLEX modules the machine offers revolutionary flexibility at highest soldering quality.

The compact system SMARTFLOW 2020 convinces with technology without compromise on smallest footprint – the ideal system for small batches or prototypes.

SELECTIVE SOLDERING



The innovative "Peel-Off" function of the Erska mini wave soldering modules in single solder pots enables to optimally form solder joints when soldering on a horizontal level, and the formation of solder shorts (bridging) can be almost eliminated. Since there is no preferred direction in the run-off of the solder from the nozzle, the solder wave can be moved in any direction.



In addition to mini wave soldering modules in single solder pots, Erska offers multi-wave soldering modules for large quantities, which are used in the VERSAFLOW series and the ECOCELL. This allows the cycle time to be reduced extremely and the throughput – with reproducible soldering results – to be increased to the max.



SMARTFLOW 2020: Perfect start-up solution! Compact, extremely easy to maintain and with full-area IR preheating top and bottom side



ECOSELECT 1: Small dimensions - big technology. Compact batch system with up to two flux heads and two solder pots for small and special series



ECOSELECT 4: Compact inline and batch system with up to two flux heads and two solder pots, power convection, VERSACAM and 508 x 508 mm soldering area



ECOCELL: Inline and batch system for maximum flexibility in production layout; ideal for connection to working stations and peripherals



VERSAFLOW 3 series,
available as VERSAFLOW 3/45
or VERSAFLOW 3/66



The Ersa CAD Assistant creates four optimal soldering programs quickly and easily - with autorouting and 3D views.

WAVE SOLDERING

POWERFLOW: INDIVIDUAL SOLUTION IN EACH SIZE.

The POWERFLOW ULTRA full-tunnel nitrogen wave soldering system represents the maximum expansion stage of this generation of machines and offers a wide range of configuration options, thanks to which the system can be adapted for special customer requirements.

The machine is available with both frame and finger conveyor. Working widths from

330 up to 610 mm are possible in the XXL version. Thus, for example, server boards for 5G telecommunication can also be soldered with the POWERFLOW ULTRA XXL.

The POWERFLOW PRO wave soldering system has been conceived for average production volumes and batch sizes, and its design concept allows achieving substantial cost savings through the drastic reduction of dross generated. It is available, as is the high-end model of the POWERFLOW series, with a pallet as well as a finger type conveyor.



POWERFLOW N₂ ULTRA XL



POWERFLOW PRO



POWERFLOW

ERSA POWERFLOW ULTRA XXL

Full tunnel nitrogen wave soldering machine perfectly designed for 5G soldering tasks.

- Maximum working width up to 610 mm
- Industry 4.0 capable – with Kurtz Ersä GATE and Kurtz Ersä CONNECT
- ERSASOFT 5 – award-winning user interface
- Modular preheating configuration for flexible and reproducible heat input
- 2,4 m preheating distance for maximum throughput
- Long-lasting cleanliness due to continuous process gas purification

HANDLING & AUTOMATION



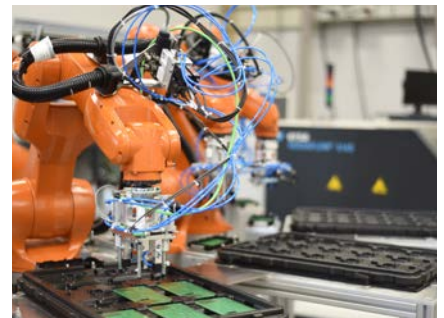
SYSTEM OF ALMOST UNLIMITED POSSIBILITIES.

Ersa is successful worldwide with systems and machines for the production of electronic assemblies. There is less and less demand for single machines. Rather, it is about offering complete solutions, i.e. complete production lines and integrated process automation, and thus assuming responsibility for the entire production process. This applies both to the requirements of mass production and to the individual, demand-oriented production of customer-specific products. Especially in this area, there is an increasing demand for solutions that enable flexible manufacturing strategies.

In any case, Ersa has the know-how and the right solution for every individual

requirement. In addition to its broad portfolio of machines equipped with innovative technology for practically every requirement and its extensive process know-how in electronics manufacturing, Kurtz Ersa also offers customized handling and automation solutions.

Further, there is a modular system with various conveyor/handling modules as well as manual/inline workstations with different focuses, and processes can be automated through the use of robotics. The wide Ersa range can be individually adapted to practically all conceivable wishes and requirements. The goal is always to make production and processes more efficient and economical, thus improving our customers' profitability.



HIGHLIGHTS KURTZ ERSA AUTOMATION

- Industrial robotics
- Transport and palletizing systems
- Industrial image processing
- Process simulation
- Automation consulting
- Modular systems
- Overall plant concepts



THE MISSING LINK

NEW: i-CON TRACE

The world's most connected
soldering station.



i-CON TRACE

Complete traceability for manual soldering at last!

Manufacturers of electronic assemblies are currently facing numerous challenges – including the advancing miniaturization of the components to be processed, an ever increasing component density on the PCBs to be processed and the growing variance of different assemblies. In order to keep the overview here and to be able to continuously improve processes, traceability and precise process data documentation in assembly production are becoming more and more important.

Traceability has long been an integral and indispensable part of the machine soldering process. The situation is different with traceability in the manual reworking of assemblies with a hand soldering station. However, as soon as rework is carried out with a soldering iron, the complete documentation of the entire soldering process was previously no longer possible. For this reason, many electronics manufacturers have completely dispensed with a manual soldering process or only permitted this following elaborate special approval.

100 years after the patent application of the first electric soldering iron by company founder Ernst Sachs, Erska has reinvented hand soldering - for the digital age. The i-CON TRACE is the world's first IoT-enabled soldering station. With its integrated WLAN, Bluetooth and network card, it can be fully integrated even into MES-controlled production processes and makes the entire hand soldering process traceable and verifiable.

Further
Information:



HAND SOLDERING



PRECISION TOOLS FOR EACH INDIVIDUAL TASK.

The i-CON VARIO 2 multi-channel soldering and desoldering station makes it possible for the user to operate two tools at the same time. A portfolio of ten soldering and

desoldering tools offers a suitable tool for every application. Starting with the proven i-TOOL with its huge portfolio of tips, the i-TOOL AIR S for professional soldering and desoldering of components with hot air, to the i-TOOL HP for highest solder heat requirements.

The soldering and desoldering stations i-CON 1V and i-CON 2V are the advancement of the popular i-CON series on basis of the future-oriented VARIO platform. Both soldering stations are equipped with an intelligent and, dynamic power management and are able to run additionally to the hitherto soldering and desoldering tools the SMD desoldering tweezers CHIP TOOL VARIO, the desoldering tool X-TOOL VARIO and the new i-TOOL HIGH POWER.

For the Erska soldering tool division, the emphasis rests on soldering and desoldering stations for the use in microelectronics and SMD assemblies up to thick-copper applications.

Ersa stations impress by their compact size, high performance, energy efficiency and low operating costs, since inexpensive exchange soldering tips are used.

The multi-channel soldering and desoldering station i-CON VARIO 4 is the flagship of the i-CON family. With up to four connectable soldering and desoldering tools it meets the highest demands of professionals.



Further Information:



i-CON VARIO 4



i-CON NANO



i-CON 1V



i-CON 2V



i-CON VARIO 2

SOLDERING ROBOTS



Ersa SOLDER SMART

SOLDER SMART: ACCURATE, AUTOMATIC, PRECISE.

The Ersa SOLDER SMART soldering robot works with the powerful Ersa i-TOOL, which has proven itself thousands of times in industry. Its enormous heating power of 150 W allows fast soldering processes at stable soldering temperatures and the use of very fine soldering tips from 0.3 mm up to mighty wide tips up to 5 mm and more!

The x-/y-portal opens a large working area of 500 x 400 mm. The soldering robot has two separate z-axes for precise and almost powerless positioning of the soldering tip. In addition, each soldering point can be approached from any direction with the aid of a rotary axis and practically every soldering process can be programmed. The operating software (for Windows™) supports the user in all work processes and also documents them.

SOLDER FUME EXTRACTION

FOR CLEAN AIR IN SILENCE.

The highly flexible solder fume extractions EASY ARM 1 and EASY ARM 2 are based on over 15 years of experience in the field of process air cleaning. The functional design combined with a high extraction rate, an efficient filter system and the silent operation characterize both devices. A large choice of extraction arms allow the easy adaption to any individual workspace.



EASY ARM 1 & 2



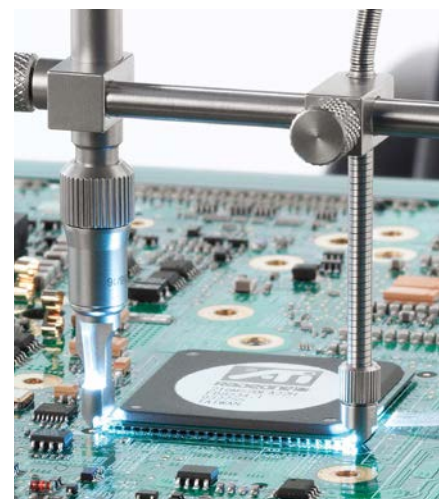
INSPECTION

ERSASCOPE: IF YOU NEED TO KNOW IT EXACTLY.

It does not matter whether the purpose is to inspect a BGA which has just been replaced using the rework system, or whether the aim is to establish or verify correct process parameters – the ERSASCOPE inspection system has established itself as the preferred tool to non-destructively inspect hidden solder joints, and as such it should be at hand in each and every electronics manufacturing environment. The MOBILESCOPE is the mobile version of Ersa inspection systems.



ERSASCOPE M plus



REWORK

REWORK MADE EASY. IN ALL DIMENSIONS.

For more than a decade now, over 5,000 users worldwide are drawing benefits from using the patented IR rework technology. Aside from its very attractive price-performance ratio, the units have gained their strong market position because they deliver excellent results even with the most complex rework tasks.

Ersa has a model diversity that extends to automated hybrid stations with extensive accessories.

The hybrid rework system HR 600/2 sets standards in the automated rework of PCBs.

In addition, Ersa offers the HR 550 – a further high-performance model for safe and easy manual rework with guided processes. The latest Ersa system, the HR 600 XL, has been developed for large PCB formats of up to 625 x 1,250 mm and handles component sizes of 60 x 60 mm without any problems. Thanks to the innovative IR Matrix Heater™ and 16 kW power, the HR 600 XL ensures the safe processing of large, high-mass assemblies.



The compact system HR 200 for rework applications “out of the box” convinces professionals and beginners not only with its easy setup, but also with its intuitive operation.



HR 600 XL: For the largest Ersa Rework system, an XL heating head is also available as an option. 120 x 120 mm edge length can be processed.



HR 550



HR 200



HR 100



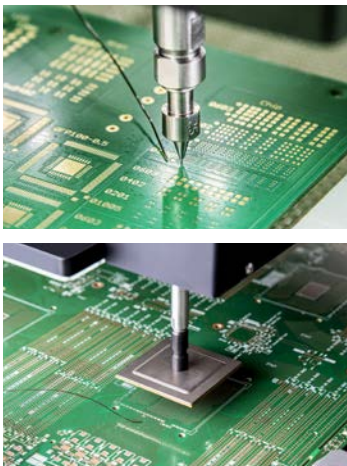
HR 550



HR 550 XL



HR 600/2



Highest precision and reliability for every conceivable component size (from 01005) is guaranteed with Ersa Rework systems.

News from the Rework family.

The youngest members of the family inspire with their interesting technological features in the field of heating and placement technology and expand the variety of options for users.

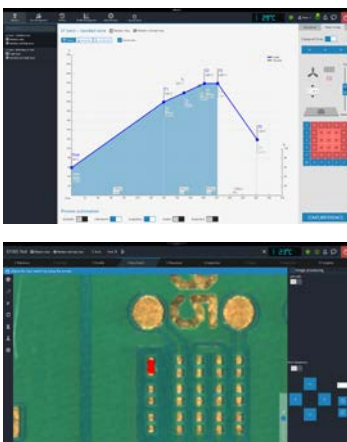
With the HR 550 XL, Ersa provides a semi-automatic system for large assemblies up to approx. 530 x 610 mm - a real high-performance system with eight bottom-radiation heating zones and motorized X/Y fine adjustment and component rotation. The system is suitable

for industrial and power electronics and large-format boards and is particularly attractive for service providers.

The HR 500 offers the full Ersa hybrid rework technology for budget-oriented users. The little brother of the HR 550 allows flexible repairs of standard assemblies up to 380 x 300 mm and 50 x 50 mm component size.



Further Information:



Guided processes in HRSoft 2.0 and with a 5-MPx camera ensure perfect and reproducible rework results. Screenshot shows the screenshot of a 01005 component placement.

ERSA HYBRID REWORK			
Stations	Systems (with component placement)		
S	M	L	XL
HR 100	HR 500	HR 550	HR 550 XL
HR 200		HR 600/2	HR 600 XL
IR 550 (infrared radiation only)			

PROCESSES ERSa HYBRID REWORK SYSTEMS	
semi-automatic	automatic
HR 500	HR 600/2
HR 550	HR 600 XL
HR 550 XL	

SERVICES

EXCELLENT SERVICES - AROUND THE GLOBE.

Ersa and soldering have been a uniquely successful combination in the electronics processing industry since 1921. Right from the start, the focus was on the entire manufacturing process - in addition to first-class products.

In accordance with its corporate philosophy, Ersa offers attractive services and service packages that optimize the manufacturing processes on the customer side. We are particularly proud of our comprehensive system consulting for every aspect of soldering, which our customers use in their production to create invaluable added value - whether as a concrete application, in the form of complex process details or in terms of total cost of ownership!

In our fully equipped application centers, our customers in Europe, North America and Asia - supported by Ersa engineers - determine optimum process parameters for their assemblies.

With 7 application centers worldwide and over 85 highly qualified service employees, we are excellently positioned around the globe to offer our customers first-class service - complemented internationally by 10 sales and service offices and over 70 high-performance Ersa agencies with their own service teams and spare parts warehouses.

OUR APPLICATION CENTERS

- Wertheim, Germany
- Plymouth, USA
- Guadalajara, Mexico
- Shanghai, China
- Shenzhen, China
- Penang, Malaysia
- Ho-Chi-Minh-City, Vietnam



Ersa Webshop online!

Machine parts, spare parts & consumables available 24/7



OUR ADDED VALUE FOR YOU

- Worldwide service network
- 24/7 in Europa, USA and China
- Remote service
- Order 24/7 spare parts online
- Spare parts delivery within 24 hours
- Machine and Process audits
- Maintenance contracts
- Ramp-up support
- Process support
- Machine capability studies
- Pilot production, test production and rework
- LIVE streaming sessions for customers
- Kurtz Ersa Connect Portal
- Service-APP with Ticket System

TAILOR-MADE TRAINING AND EDUCATION OFFERS.

Qualified employees are the key to increasing productivity. Ersa therefore supports its customers and interested parties all year round and worldwide with practice-oriented personnel qualification offers and technology transfers in a wide variety of forms.

The Ersa training and education catalogue, which is published annually and available online, provides information about the individual seminars, training courses, training and education offers. For this purpose, professional training facilities with the latest equipment are available in in-house application and demo centers around the world.

Whatever your needs, the Ersa training program covers all aspects of professional soldering - from solder paste printing to reflow, selective and wave soldering to rework and hand soldering.

TECHNOLOGY TRANSFER



OUR TRAINING OFFERS

- Know-how seminars
- Customer-specific technology days in theory and practice
- Practical trainings
- LIVE streaming applications
- AVLE training modules
- E-Learning offerings



or quality managers, who purchase their products, for example from EMS service providers or suppliers.

Being the no. 1 system supplier for electronics manufacturing, we also offer you a wide range of soldering courses, including manufacturer-neutral seminars with seminars for beginners to machine experts. All courses consist of a balanced mix of theory and practice. Due to the small groups of participants, it is possible for the trainers to answer questions individually.

Soon Ersa will go live its new e-learning program, which is available via the web-based service platform Kurtz Ersa CONNECT and also as an APP.

kurtz ersa

UP-TO-DATE. PROFESSIONAL. CERTIFIED.

TRAININGS 2022.
DRIVEN BY KURTZ ERSA.

BENEFIT FROM 100 YEARS OF SOLDERING EXPERIENCE

CUSTOMIZED TRAINING AND EDUCATION FOR STAFF QUALIFICATION IN ELECTRONICS PRODUCTION.

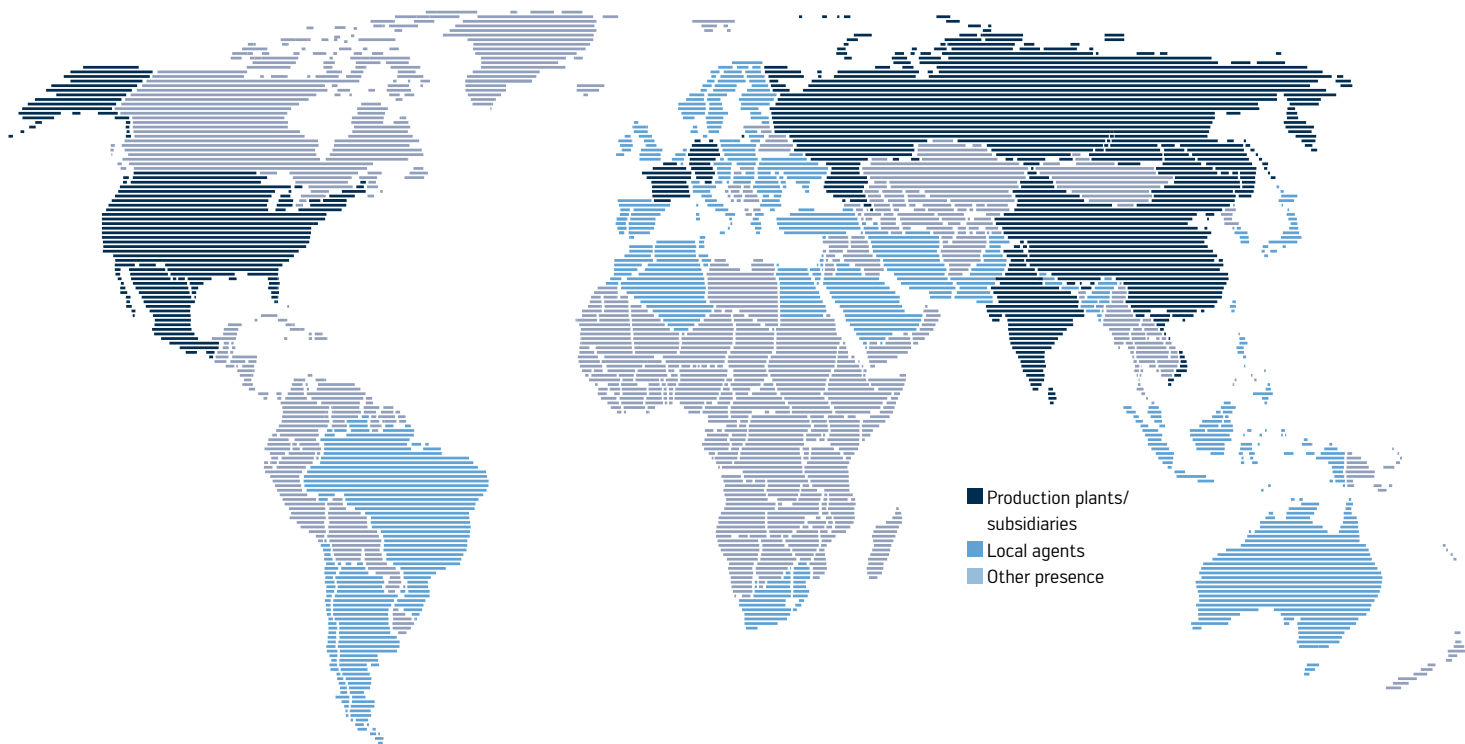
During our exclusive Technology Days, you are welcome to explore the limits of the industrial soldering technology in theory and practice. These Technology Days are organized individually and carried out to your company's needs and requirements so that an exchange across departments and locations is also possible. Whether manufacturer-neutral or specifically aligned to Ersa soldering systems - with you are the focus! Whether customer-specific Technology Days, process technology and optimization or further topics from the wide world of soldering - what would you like to focus on?

Numerous global players have already benefited sustainably from our individual Technology Days - face the future demands of the market with the support of Ersa! The exclusive Technology Days are also available for users, such as auditors



ELECTRONICS PRODUCTION EQUIPMENT

Worldwide presence



America

Kurtz Ersa, Inc.
1779 Pilgrim Road
Plymouth, WI 53073
USA
Phone +1 920 893 3772
aus den US: 1 800 363 3772
usa@kurtzersa.com
www.ersa.com

Mexico

Kurtz Ersa, S.A. de C.V.
Av. Lopez Mateos Sur Núm. 1450 Int. 7
Col. Las Villas (Plaza las Villas)
Tlajomulco de Zúñiga, Jalisco
C.P. 45643
México
Phone +52 33 15 93 18 63
info-kmx@kurtzersa.com
www.ersa.com

Asia

Kurtz Ersa Asia Ltd.
Unit 03-05, 8th Floor
One Island South
No. 2 Heung Yip Road
Wong Chuk Hang
Hongkong
China
Phone +852 2331 2232
asia@kurtzersa.com
www.ersa.com

China

Ersa Shanghai
Room 720, Tian Xiang Building
No. 1068 Mao Tai Rd.,
Shanghai 200336
China
Phone +86 213126 0818
info-esh@kurtzersa.com
www.ersa.com

Vietnam

Kurtz Ersa Vietnam Company Limited
B916 Road 3, Kizuna 2 Factory Area, Lot
B4-3-7-8, Tan Kim IP, Can Giuoc Dist.
Long An Province, Vietnam
Phone +84 2723 733 682
info-kev@kurtzersa.com
www.ersa.com

India

Kurtz Ersa India
Smart Production Technologies
Private Limited
Plot Nr 18, Survey No. 43
KA 560100 Bangalore
Telefon: +91 973 954 5461
india@kurtzersa.com
www.kurtzersa.com

France

Kurtz Ersa FRANCE
2, Avenue de Wissembourg
67500 Haguenau
France
Phone: +33 6 07 78 01 87
kefrance@kurtzersa.com
www.ersa.com

Ersa GmbH
Leonhard-Karl-Str. 24
97877 Wertheim/Germany

Phone +49 9342 800-0
Fax +49 9342 800-127
info@ersa.de
www.ersa.com

 **kurtz ersa**