

## 21W AC-DC PCB-Mount Green Power Module

### YSM20-1501400

#### ■Features:

- 1.1.8"×1"compact size
- 2.Universal input 100-240VAC
- 3.No-load power consumption < 0.1W
- 4.EMC meets Class B requirements without additional components
- 5.Wide operating temperature range from -30°C to 70°C
- 6.Protection type:short circuit / over load / over voltage
- 7.Natural air cooling
- 8.Class II isolation level
- 9.By LPS
- 10.Three year Warranty

业务/SALES: ZhuXiaoYing      核准/APPROVED BY: LiJin

设计/DESIGNED BY:

---

宁海县鹰峤电气有限公司/NinghaiYingjiao Electrical Co.,Ltd.

Tel/电话: 0086-574-27862391、27862392

Add: Cuijia Village Xidian Town Ninghai County Ningbo China 315613

<http://www.yingjiao.com>    <http://www.yingjiaodriver.com>

## 1、OUTPUT/输出:

DC VOLTAGE /DC 电压: 15V

RATED CURRENT/额定电流: 1.4A

CURRENT RANGE/电流范围: 0~1.4A

RATED POWER/额定功率: 21W

RIPPLE&NOISE(max.)纹波&噪音: 200mVp-p

VOLTAGE TOLERANCE/电压公差:  $\pm 2.5\%$

LINE REGULATION /线性调整率:  $\pm 0.3\%$

LOAD REGULATION /负载调整率:  $\pm 1\%$

SETUP,RISE TIME/启动上升时间: 2s,20ms at full load

HOLD UP TIME (Typ.)/保持时间: 40ms/230VAC 8ms/115VAC at full load

## 2、INPUT/输入:

VOLTAGE RANGE/电压范围: 85-264VAC

FREQUENCY RANGE:47-63Hz

EFFICIENCY (Typ.)/能效: 83%

AC CURRENT (Typ.)/AC 电流: 0.7A/100-240VAC

Inrush Current/浪涌电流: COLD START20A/115VAC 40A/230VAC

LEAKAGE CURREN/漏电流:  $< 0.25\text{mA}/264\text{VAC}$

**2、PROTECTION/保护:**

**3.1 OVERLOAD/过载:**

115%~190% rated output power

Protection type:Hiccup mode,recovers automatically after fault condition is removed

**3.2 OVER VOLTAGE/过压:**

17.25~22V

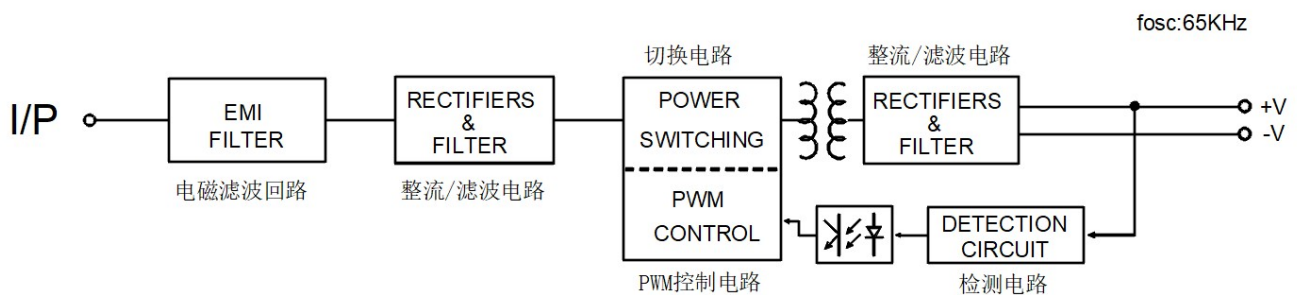
Protection type:Shut off o/p voltage,clamping by zener diode

**3、ENVIRONMENT/环境:**

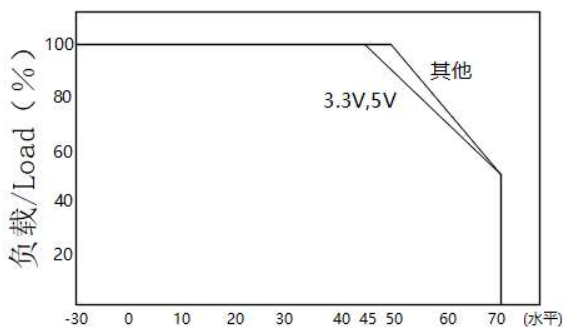
WORKING TEMP/工作温度: -30~+70°C (Please refer to the derogation curve 请参考减额曲线图)

WORKING HUMIDITY/工作湿度: 20~90% RH non-condensing

STORAGE TEMP,HUMIDITY/储存温度与湿度: -40~+85°C, 10~95% RH

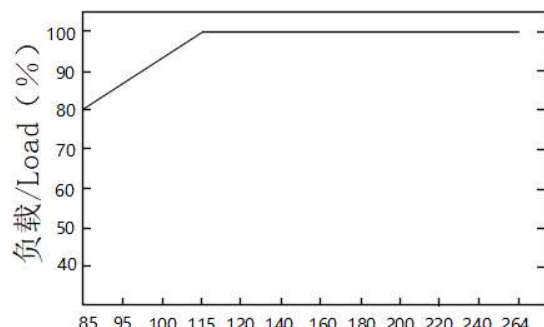


减额曲线/Derating Curve



环境温度/Ambinet Temperature (°C)

静态特性曲线/Static characteristic curve



输入电压/INPUT (VAC) 60Hz

#### 4、SAFETY&EMC/安规&EMC:

SAFETY STANDARDS/安规标准: EN62368-1

WITHSTAND VOLTAGE/耐电压: I/P-O/P:3KVAC

ISOLATION RESISTANCE/隔离电阻: I/P-O/P:100M Ohms/500VDC/25°C/70°CRH

EMC EMISSION/EMC 辐射: EN55032

MTBF:970.3Khrs min.MIL-HDBK-217F(25°C)

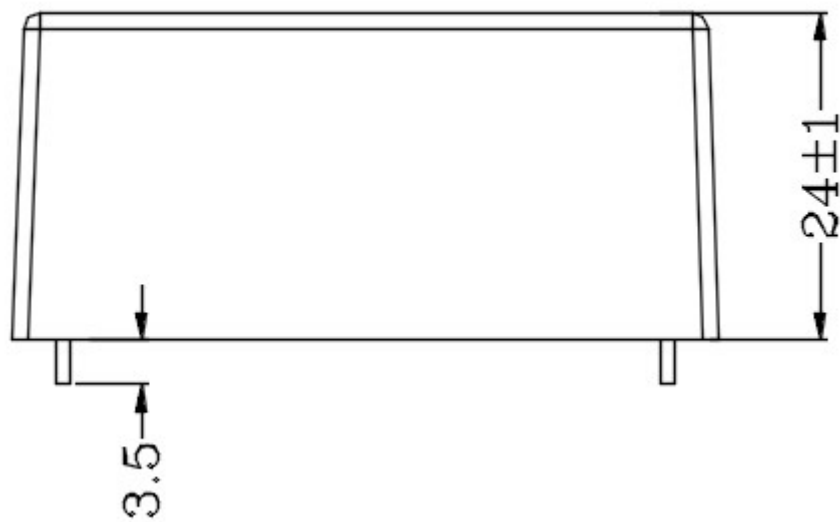
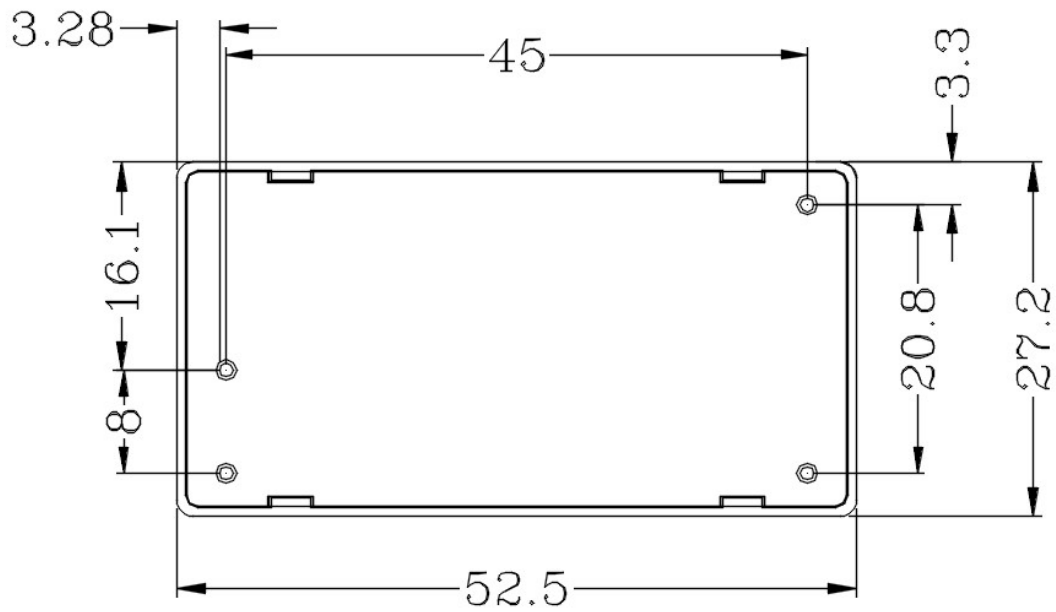
DIMENSION/尺寸: 46.08\*25.78\*21.7mm (L\*W\*H)

PACKING/包装: 0.033Kg; 270pcs/9.8Kg/0.94CUFT

#### 5、NOTE/备注:

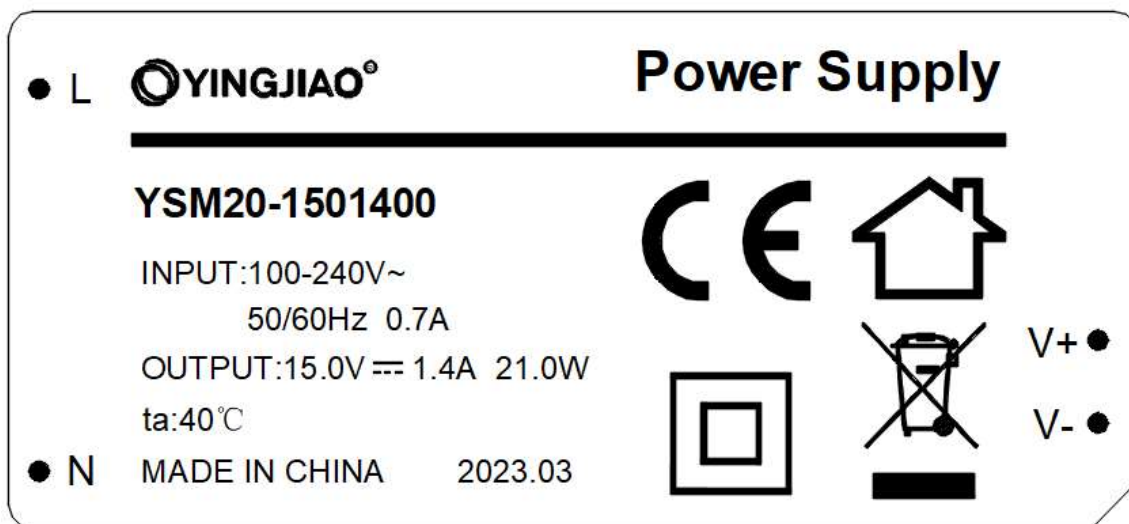
- 1.All parameters NOT specially mentioned are measured at 230VAC input,rated load and 25°C of ambient temperature.
- 2.Ripple & noise are measured at 20MHz of bandwidth by using a 12 " twisted pair-wire terminated with a 0.1uf&47uf parallel capacitor.
- 3.Tolerance:includes set up tolerance,line regulation and load regulation.
- 4.Line regulation is measured from low line to high line at rated load.
- 5.Load regulation is measured from 0% to 100% rated load.
- 6.The power supply is considered a component which will be installed into a final equipment.  
The final equipment must be re-confirmed.

6、外形尺寸/OUTLINE DIMENSION:

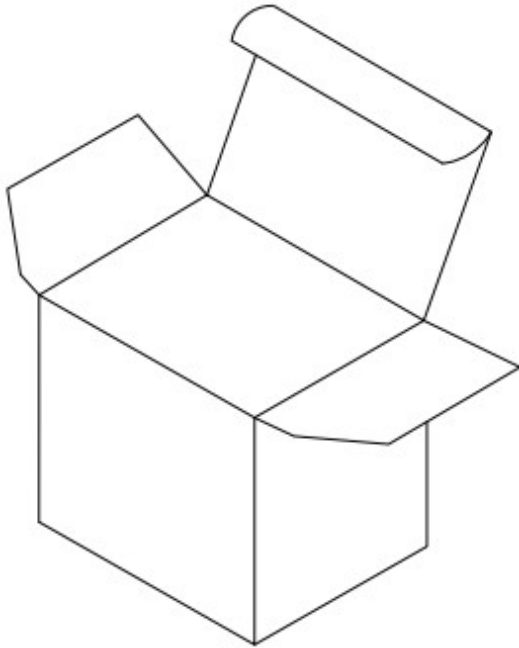


7、铭牌标签/LABEL:

标签材质：镭射 Laser printing .



8、包装说明/PACKING STEP:

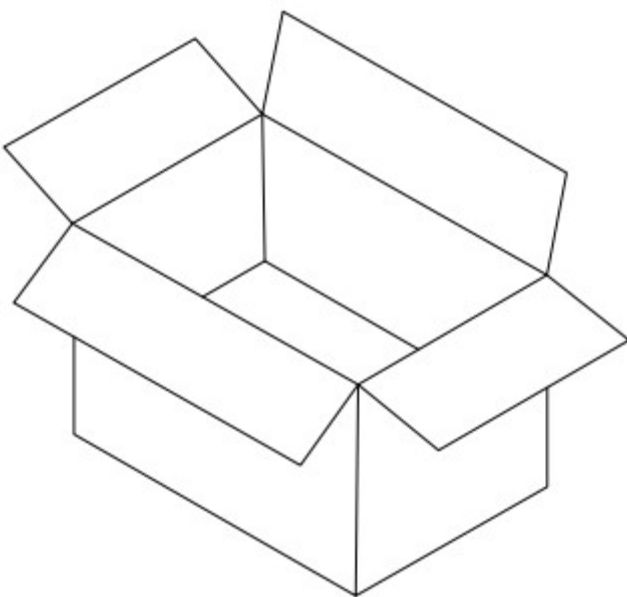


白盒/ White box:

长/ Length:55mm

宽/ Width:35mm

高/ Height:33mm



Packing request:

Packaging

Outside box:300L\*200W\*155H

Quantity:100PCS/CTN